



Proud to be your service provider for the collection of **Recyclables, Organics, & Garbage.**

# Multi-Family Residential News

MAY 2021

## Proper Sorting is Essential

*Keep Recyclables out of the Landfill!*

**KNOW WHERE TO THROW GARBAGE & ORGANICS DO NOT** belong in the blue **RECYCLABLES** collection containers. For posters, guides, and more, please visit: [www.sanramonrecycles.com/multi-family/resources/](http://www.sanramonrecycles.com/multi-family/resources/).

For a comprehensive list of what belongs in each collection container, visit our website or scan the QR code at right.

### MAINTAIN A CLEAN STREAM!

Empty, wipe and/or rinse recyclable plastic, metal and glass food containers; and make sure recyclable paper is clean and dry before placing in the **RECYCLABLES** containers.

### Sorting Tip - Keep an Eye on the Size!

Corrugated cardboard and paper boxes should be flattened and large pieces cut to 3' x 2' or smaller. Doing so:

- Allows for more room in the container.
- Prevents overflow and litter.
- Assures the pieces will fit in the hoppers of the collection vehicles.

*Due to COVID restrictions, please keep items placed outside of your containers to a minimum. Thank you!*



## City and State Regulations Require Recycling & Composting\*



*Do your part to reduce the amount of material going to the landfill and greenhouse gas emissions.*

All occupied properties in San Ramon must subscribe to adequate levels of service for recyclables, organics and garbage.

*Do you need to improve your Recycling and Organics Program? We can help!*

ACI of San Ramon Sustainability Specialists are available for a phone call or visit to your complex to:

- Conduct waste assessments.
- Make service suggestions.
- Help train and give presentations to employees and tenants.
- Provide materials to assist your tenants with proper sorting and waste reduction.

**PLEASE NOTE: Social distancing protocols must be practiced.**

\*Visit: [www.CalRecycle.ca.gov](http://www.CalRecycle.ca.gov) for more info about the State's Mandatory Commercial Recycling requirements.

## Thank You for Taking These Easy Steps to Help us Help You!

- Properly sort your materials.
- Make sure your container lids close to prevent overflow and litter.
- Bag loose trash and place in the gray garbage containers.  
*(Remember that items such as masks, gloves, wipes, tissues, and anything with bodily fluids on it should be bagged and placed in the garbage.)*
- Keep items placed outside of your containers to a minimum.



**WE ARE HERE TO HELP!** Our offices are open to the public Monday through Friday 9am - 7pm. Please note that social distancing protocols are in effect. You can also contact us via phone: **925-380-9480** or email: [info@alamedacountyindustries.com](mailto:info@alamedacountyindustries.com).

**USE OUR WEBSITE** [www.SanRamonRecycles.com](http://www.SanRamonRecycles.com) ANYTIME TO:

- Contact us.
- Fill out and submit service forms.
- Use/create an online account (*select the red "Account Login" button*) to pay your bill online and sign up for paperless billing.
- Get collection information, schedules, FAQs, and more.

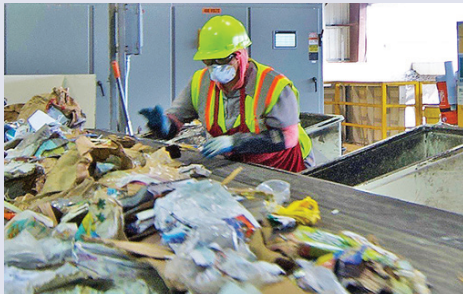
## Holiday Service Schedule



Collection days will NOT change during the week of Memorial Day or July 4th. Our drivers will move containers in and out of enclosures for service on your regular service day(s).

**Remember:**  
**Reduce, Reuse, Recycle, Rot, and Donate!**

Videos and more available at:  
[www.sanramonrecycles.com/multi-family/resources/virtual/](http://www.sanramonrecycles.com/multi-family/resources/virtual/).



## Help Protect our Sorting Staff

*Our Materials Recovery Facility (or MuRF) sorting staff thanks you for keeping them safe by making sure needles, sharps, masks, gloves, wipes, tissues, garbage, organics, and anything with bodily fluids on it out stay out of the recycling.*


**SHARE THIS INFORMATION WITH YOUR TENANTS!** This newsletter can be downloaded and printed from our website: [www.sanramonrecycles.com/multi-family/resources/](http://www.sanramonrecycles.com/multi-family/resources/)



**Contact us:** Monday - Friday, 9am - 7pm  
610 Aladdin Avenue, San Leandro, CA 94577  
phone: 925-380-9480  
email: [info@alamedacountyindustries.com](mailto:info@alamedacountyindustries.com)  
website: [www.SanRamonRecycles.com](http://www.SanRamonRecycles.com)



For a comprehensive list of what belongs in your collection containers, scan the QR code at left or on your containers to visit: [www.SanRamonSort.com](http://www.SanRamonSort.com).

 Printed on recycled paper. Please recycle again!



**Sign up for paperless & auto-pay billing!**  
Visit our website and click on the red **"Account Login"** button in the upper right-hand corner to get started.